

Introduction of Wellsys Coupler

General Type Coupler



D TYPE P TYPE

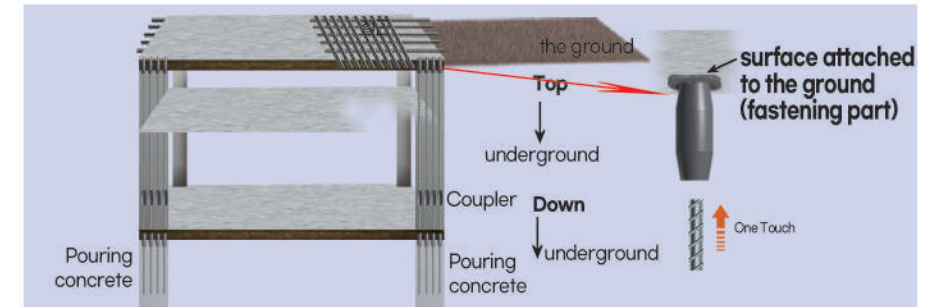
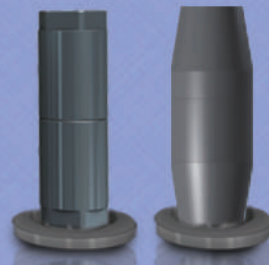
General Type Coupler (D TYPE / P TYPE)

	10mm	13mm	16mm	19mm	22mm	25mm	29mm	32mm
Fastenable Tolerance Available Rebar size (-1+2mm)	10mm ~12mm	13mm ~15mm	16mm ~18mm	19mm ~21mm	22mm ~24mm	25mm ~28mm	29mm ~31mm	32mm ~34mm

- No special machining required for reinforcing bars.

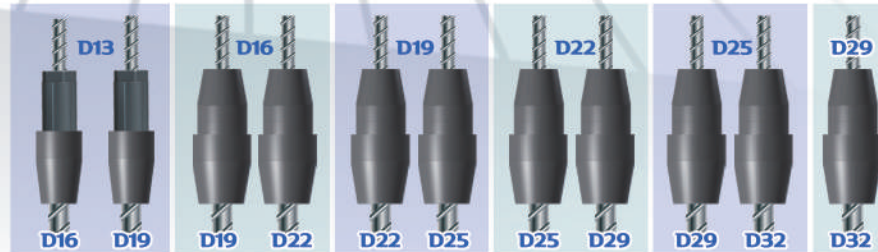
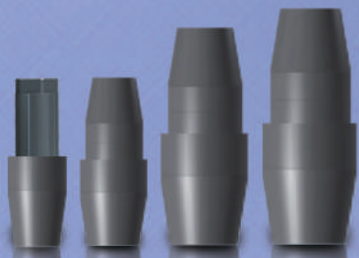
※ If it is difficult to insert the reinforcing bar, insert it after grinding the end of the reinforcing bar with a grinder.

Form Saver Coupler



- Coupler used for Top-Down construction method at construction site. (B 1F → B 2F → B 3F)

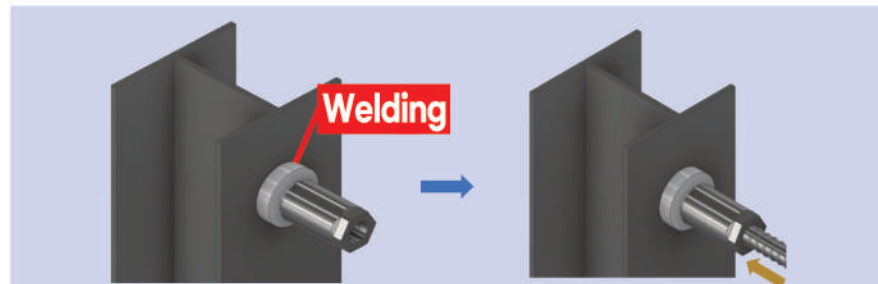
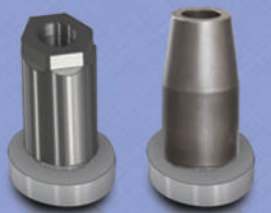
Reducing Type Coupler



D13	D16	D19	D22	D25	D29
D16	D19	D19	D22	D25	D29
D19	D22	D22	D25	D29	D32
D22	D25	D25	D29	D32	D32

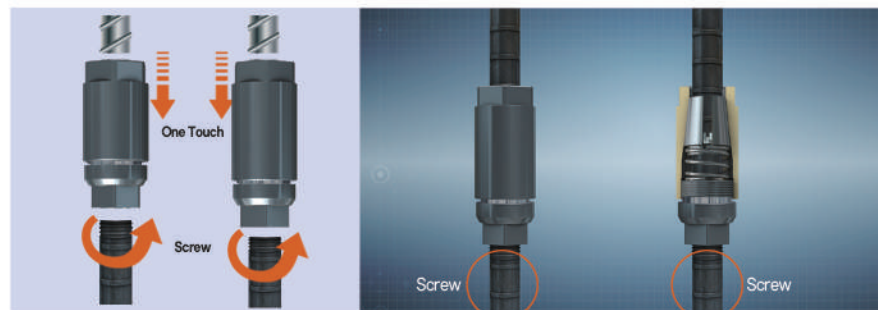
- A splice coupler that can be connected with a different diameter when the size of the rebar is different depending on the design.

Welding Type Coupler



- It is used by welding a coupler with a fixing(welding) JOINT to a steel structure. It is constructed using a mechanical joint at the end of the reinforcing bar, that is, a one-touch coupler, without hook construction by securing the anchorage length.

Hybrid Type Coupler

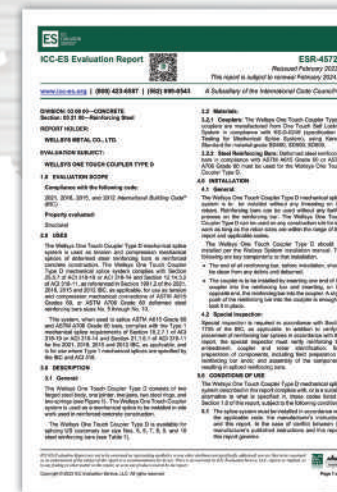


- How to connect one-touch+screw in half when screw reinforcement is installed on one side

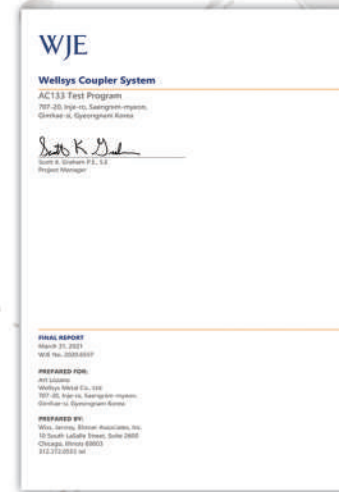
Certificate & Patent



International Code Council
Evaluation Service
Us building material
code certification



ICC-ES Certificate
No. ESR-4572



WJE Test Report



ISO 9001
ISO 9001: ISO 9001
certificate

Accredited Patent for Coupler



Accredited Patent for Design

